

Nikon

Companion Software for
COOLPIX Digital Cameras

Nikon View Ver.2

for Windows
Version 2.5

Reference Manual

Contents

Overview

Getting Started—Browsing Images

- Browsing the Images in Your Camera
- Browsing Compact Flash-Memory Cards
- Browsing Images on Disk
- Displaying Image Files as a List
- Browsing Images in the Windows Explorer

Working with Images

- Selecting Thumbnails
- Viewing Images
- Rotating Thumbnails
- Deleting Images and Folders
- Printing Images
- Refreshing Thumbnails and Folders
- Viewing Image Information
- Copying Images to Disk
- Opening Images in Another Application
- Inserting Images into Documents

Preference

- Changing Camera Type, Port and Rate Settings

Nikon View Reference

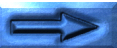
- The Menu Bar
- The Toolbar
- The Right-Button Menu

Welcome to **Nikon View Ver.2 for Windows** (below, **Nikon View**), a companion program for the COOLPIX 700, COOLPIX 800, COOLPIX 900 Series, and the COOLPIX 950 (below, "COOLPIX digital cameras"). The **Nikon View** camera driver and browser allow rapid, easy access to camera image files when the camera is connected to a computer. With **Nikon View**, the camera functions as one of your computer's drives, making it possible to apply standard Windows operations to the image files in the camera's memory. Once you have installed **Nikon View** and mastered its simple operations, you'll be able to distribute your digital photographs by disk or electronic mail, or include them in your home page and other documents you create for business or personal use.

Nikon View's principal features are listed below.

- a camera driver for the COOLPIX digital cameras, which allows you to connect your camera to a computer and access its memory in much the same way as you would an ordinary disk drive
- a browser function that makes it possible to preview at a glance all the images stored in your camera's memory, and to select items for editing, deletion, or transfer to disk

- support of OLE 2.0 Drag-and-Drop, making it easy to copy images to disk, open them in other applications, or insert them in documents
- simple operation featuring one-touch toolbars and menus
- images can be opened in any application that supports JPEG or TIFF for retouching or to be saved in another format, allowing you to use images as wallpaper for your desktop or distribute them by electronic mail
- if you have a compact flash-memory reader or a PCMCIA card slot and card adapter, the digital camera's compact flash-memory cards can be browsed even when not inserted in the camera



This manual will guide you, step-by-step, through the process of using *Nikon View* with your digital camera. For details on *Nikon View* installation and system requirements, refer to the "*Quick Start Guide*."

The Manual Layout

The contents of each chapter are outlined below.

Overview

Describes *Nikon View's* features and outlines the contents of this manual

Getting Started—Browsing Images

Introduces basic techniques for browsing images with *Nikon View*

Working with Images

Details the process of viewing images, opening them in other applications, and saving them to disk

Preference

Discusses port and data transfer rate settings adjustment


Nikon View Reference

A handy reference guide to *Nikon View's* menu bar and toolbar

With Different Operating Systems

The illustrations and explanations in this manual are for Windows 98. Display and operation may differ under Windows NT 4.0, Windows 95, or when Active Desktop is used with Windows 95. Refer to the manuals provided with your operating system.

On Symbols in This Manual

The  symbols in this manual signify the need for caution when using the product. These indications are placed in sections that should be read before operation to prevent damage to the product.

Working Knowledge

This manual assumes a basic understanding of common Windows operations. If you are in doubt about the meaning of terms used here, refer to your Windows manual.

Getting Started—Browsing Images

Once you have installed the *Nikon View* software as described in “*Quick Start Guide*,” *Nikon View* allows you to use the camera’s memory in much the same way that you would use any other drive. This chapter describes how to browse the images in the camera’s memory, compact flash-memory cards, and your computer disk.

Browsing the Images in Your Camera

You can use *Nikon View* to browse the images stored in your camera and display them as thumbnails.

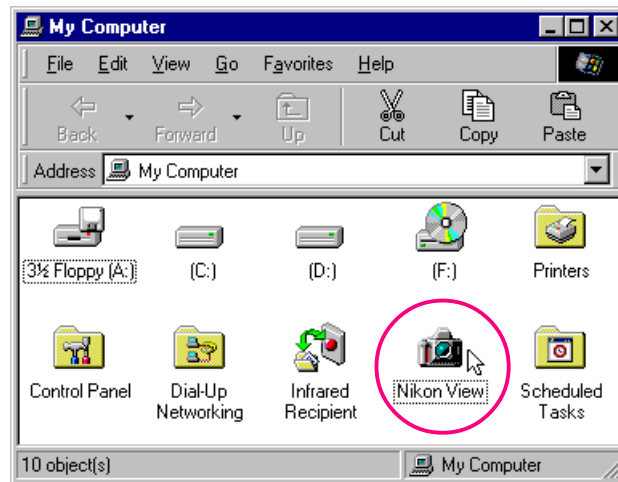
Follow these steps to view images stored in your digital camera’s memory.

- 1 Connect the camera to your computer as described in the documentation provided with your camera.

Tip

Nikon View supports one camera, attached to a serial (COM 1–4) port. It does not support multiple connected cameras or port-extension boards.

- 2 After turning on your computer, double-click the **Nikon View** icon in the My Computer window.



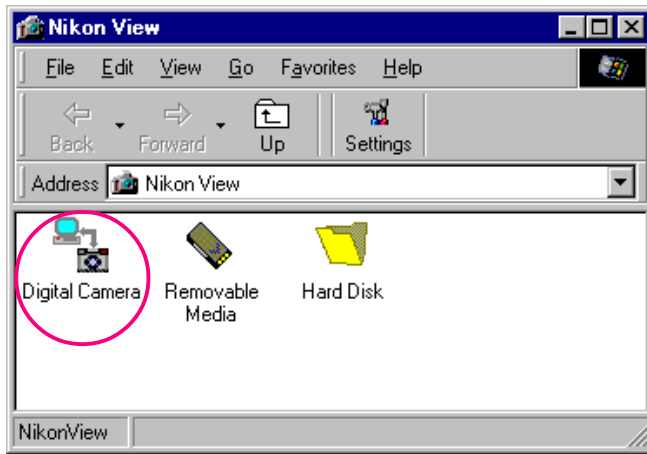
The Nikon View window will open.

Tip

The camera will not function as a network drive. Consequently, the **Nikon View** icon will not be visible to other computers.



3 Double-click the **Digital Camera** icon.

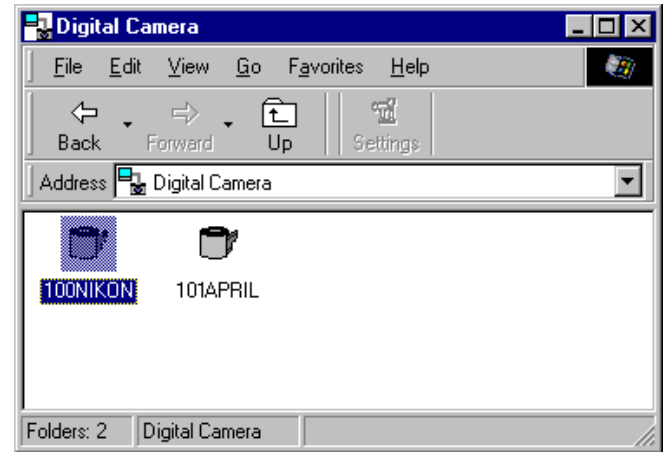


Caution: The data-transfer icon in the camera's control panel is displayed while the computer communicates with the camera. The data-transfer icon is displayed for up to sixty seconds after transfer of data is complete. Do not disconnect the camera while the icon is displayed. (The data transfer icon varies according to your camera model.)



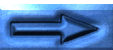
The data-transfer icon
(COOLPIX 950)

Folders saved in the camera's memory are represented by a roll film icon.



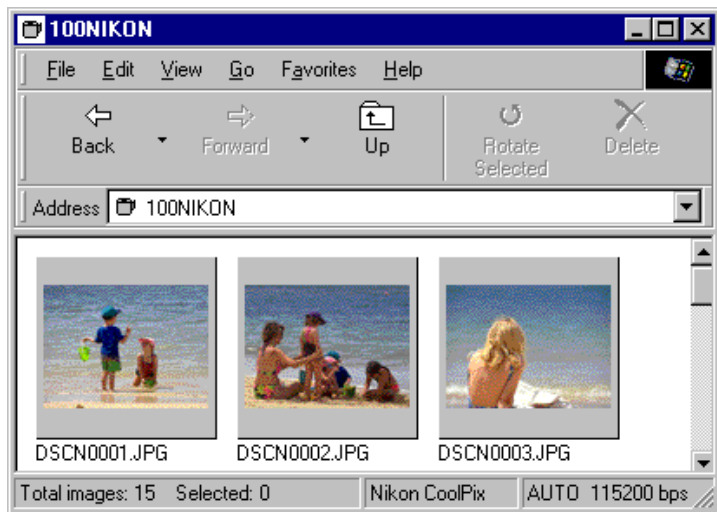
Folder Names

When displayed in *Nikon View*, folders created with the camera are prefixed by a three digit folder number. Thus, the default folder, which when viewed from the camera menu has the name "NIKON," is displayed in *Nikon View* as "100NIKON." Each folder can hold up to 999 images. If this number is exceeded, the camera will create a new folder with the same name but a different prefix (e.g., "101NIKON"). When viewed on a computer, folders with the same name but a different prefix appear as separate folders. When viewed from the camera menus, however, folders with the same name appear to be the same folder, although the full folder name with prefix appears in the photo information display in playback mode.



4 Double-click the folder icon.

The images in the selected folder will appear as thumbnail images.



You can then view each thumbnail at full resolution, and print, delete, or copy it. See the following chapter for details.

Tip

The camera's memory is treated as write-protected when browsing in *Nikon View*. Files can not be copied from other folders to the browsing window, nor can files be saved to the camera after editing in another application. The file names displayed in the browsing window can not be changed. Should you wish to change a file name, do so after copying the image to disk.

Connection error

If the computer is unable to establish connection with the camera, the following dialog box will appear.



After clicking **OK** to close the dialog box, check that the camera and computer are connected and that the camera's selector dial is not set to **OFF**. If the data transfer icon does not appear in the camera's control panel, check whether the serial cable is properly connected and that the batteries are properly inserted, and are not dead. If you are using the AC adapter, be sure that it is properly connected. This connection error dialog box will also appear if you specified the wrong port during installation. Choose the proper camera type as described in "*Changing Camera Type, Port and Rate Settings*", if you have installed *Nikon View DX* on the same computer system.

Tip

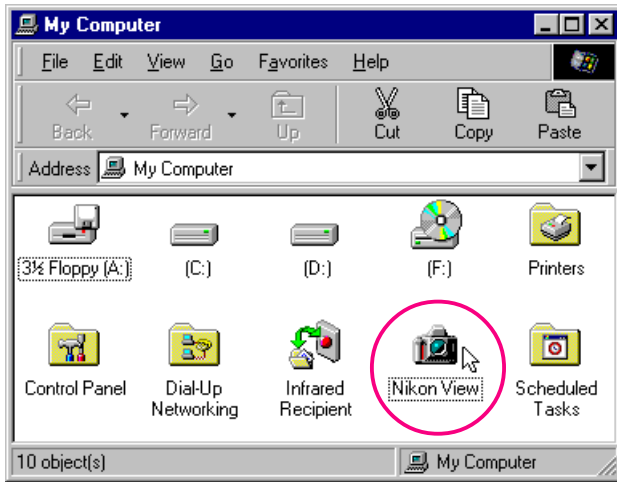
The default data-transfer rate is 115,200 bps. This setting may be too high for some i486 machines. If you experience communications problems, choose the lower data-transfer rate until you find one that works as described in "*Changing Camera Type, Port and Rate Settings*."

Browsing Compact Flash-Memory Cards

If your computer has a Type II PCMCIA card drive, you can read compact flash-memory cards using a flash-memory adapter (available separately from Nikon), or by using a compact flash card-reader. If a card containing images taken with a COOLPIX digital camera is inserted in either device, you can browse its contents by using *Nikon View*.

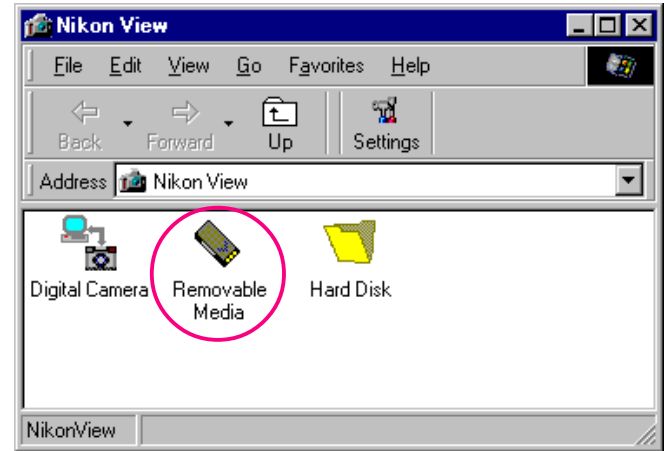
Follow these steps to view images stored on a flash-memory card.

- 1 Double-click the **Nikon View** icon in the My Computer window.

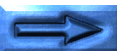
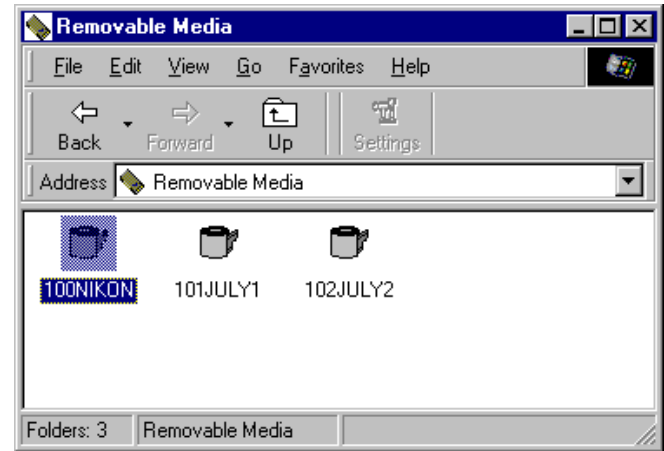


The Nikon View window will open.

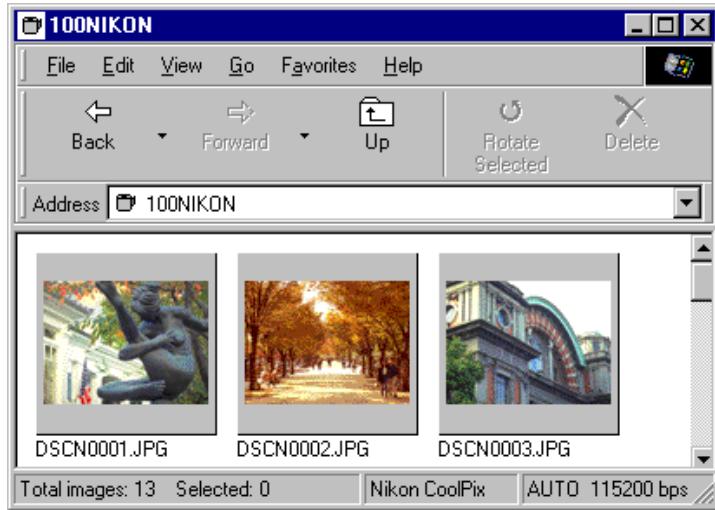
- 2 Double-click the **Removable Media** icon.



Folders in the card are represented by a roll film icon.



- 3 Double-click the folder icon.
The images in the selected folder will appear as thumbnail images.



You can then view each thumbnail at full-resolution, and print, delete, or copy it. See the following chapter for details.

Tip

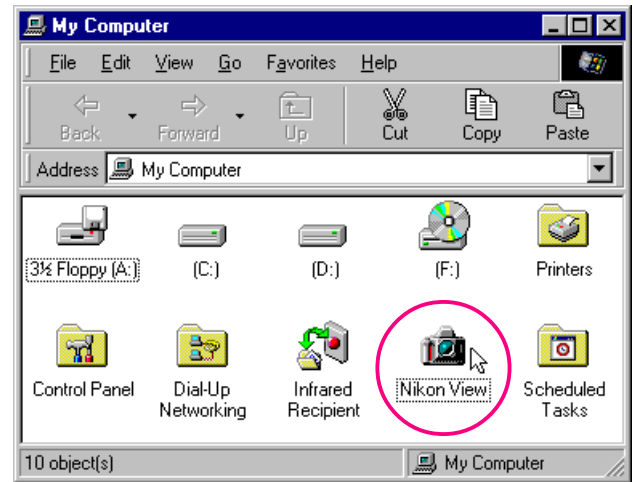
Nikon View automatically detects the drive containing the flash-memory card. When more than two drives are mounted (PC card slot or a compact flash-memory card reader), *Nikon View* selects the drive containing the memory card. If you want to browse another drive, select **Hard Disk** in the Nikon View window, and use the **Select Folder** command to select the desired drive.

Browsing Images on Disk

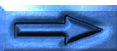
Nikon View can be used to browse images on disk even when the camera is not connected.

Follow these steps to view images on disk.

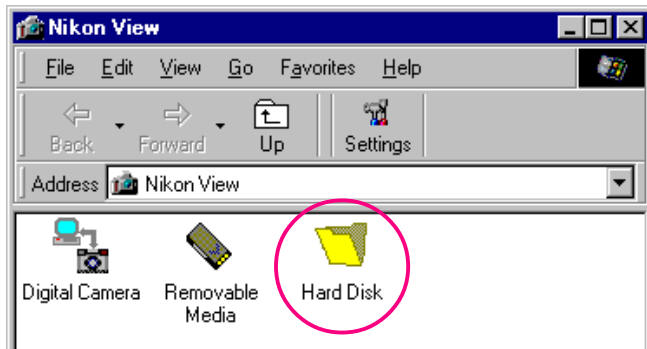
- 1 Double-click the **Nikon View** icon in the My Computer window.



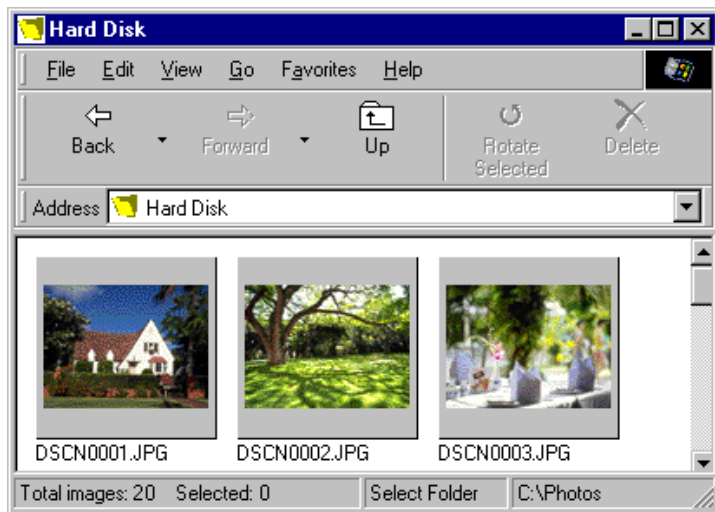
The Nikon View window will open.



2 Double-click the **Hard Disk** icon.

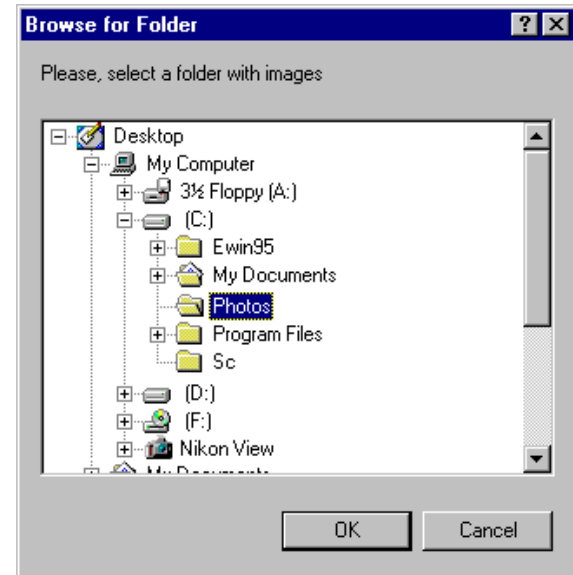


You can browse images that you have previously browsed. The images will appear as thumbnail images.



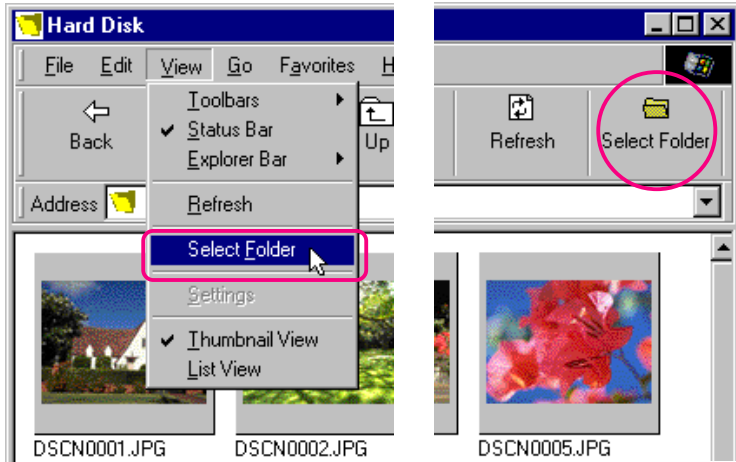
You can then view each thumbnail at full-resolution, and print, delete, or copy it. See the following chapter for details.

As there are no previously browsed images when you initially install *Nikon View*, the Browse for Folder dialog box will appear when you double-click the **Hard Disk** icon. Select the folder that you want to browse, and click **OK**. The images in the selected folder will appear.



Browsing images in another folder...

To browse images in another folder, choose **Select Folder** from the **View** menu, or click the **Select Folder** button in the toolbar. If the button is hidden, enlarge the window to bring it into view.

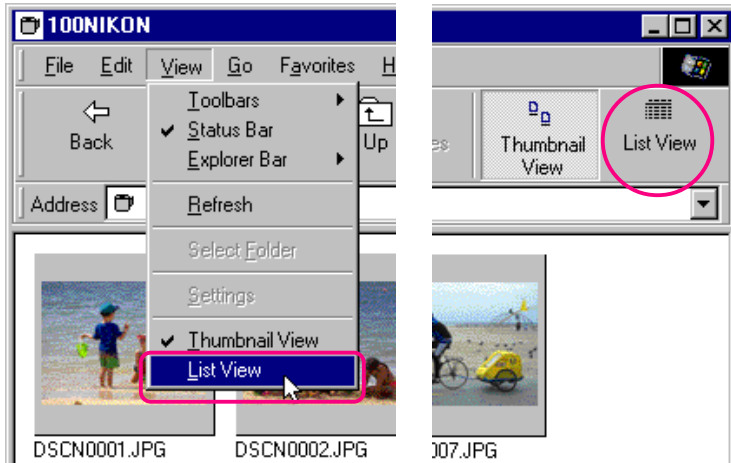


When the Browse for Folder dialog box appears, select the folder that you want to browse.

Short-cut: Click the right mouse button in an empty area of the window and choose **Select Folder** from the right-button menu.

Displaying Image Files as a List

To view information on the image's date of recording, a list-style display is available by selecting **List View** from the **View** menu or by clicking the **List View** button in the toolbar. If the button is hidden, enlarge the window to bring it into view.

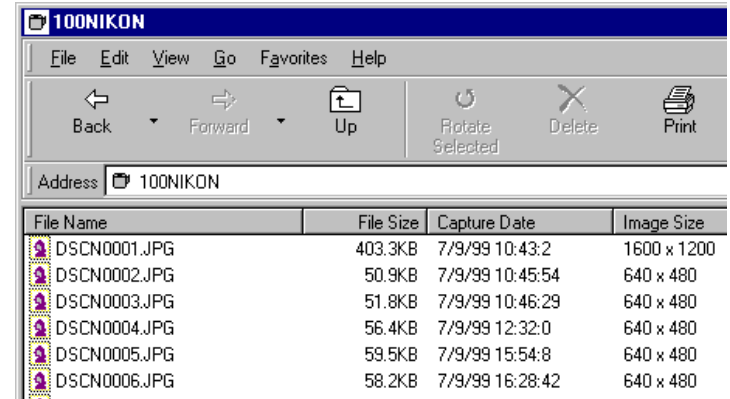


Short-cut: Click the right mouse button in an empty area of the window and choose **List View** from the right-button menu.

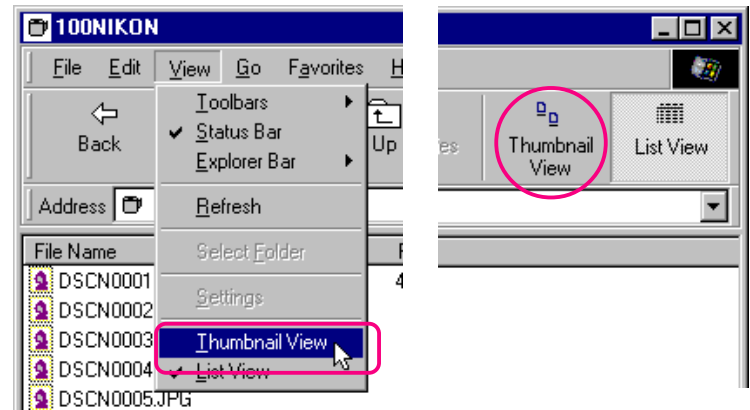
Tip

Depending on the resolution of your display, the right-edge tool buttons may not be visible, even when you maximize the image to fill the screen. In that case, open the **Toolbars** submenu on the **View** menu, and then clear **Text Labels** to change to small tool buttons without text labels.

The list-style display is shown below.



To view the images as thumbnail previews again, select **Thumbnail View** from the **View** menu or click the **Thumbnail View** button.

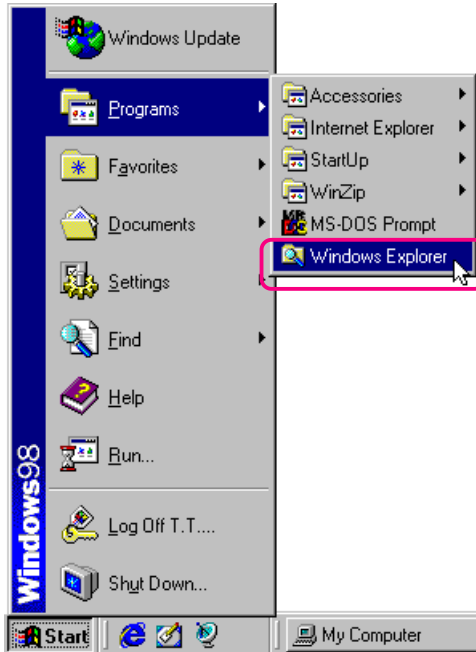


Short-cut: Click the right mouse button in an empty area of the window and choose **Thumbnail View** from the right-button menu.

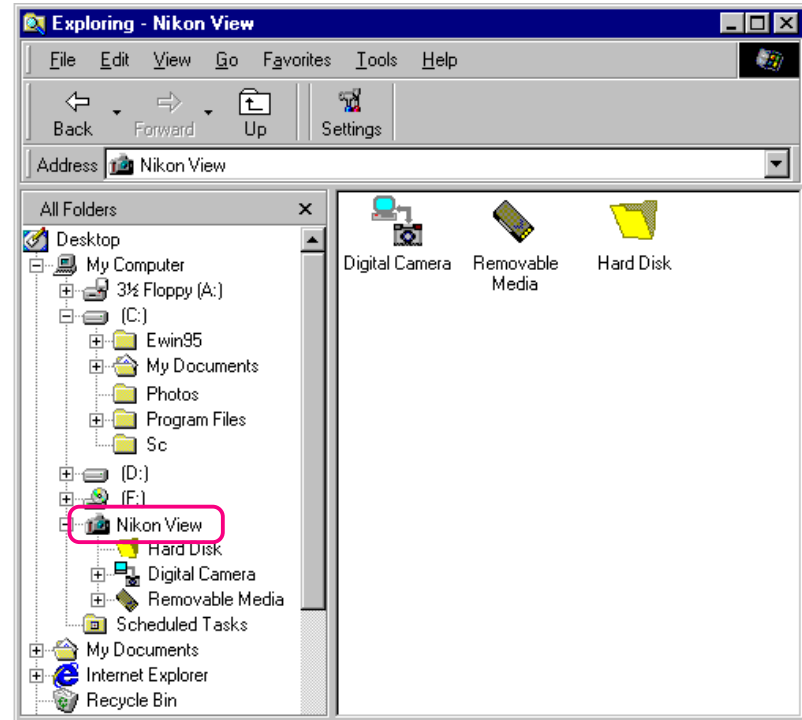
Browsing Images in the Windows Explorer

With *Nikon View* installed, you can also browse images saved in the camera using Windows Explorer.

Click the **Start** button in the taskbar and select **Windows Explorer** from the **Programs** sub-menu.



Select **Nikon View**, from Explorer's My Computer folder list to display the **Digital Camera**, **Removable Media**, and **Hard Disk** icons.



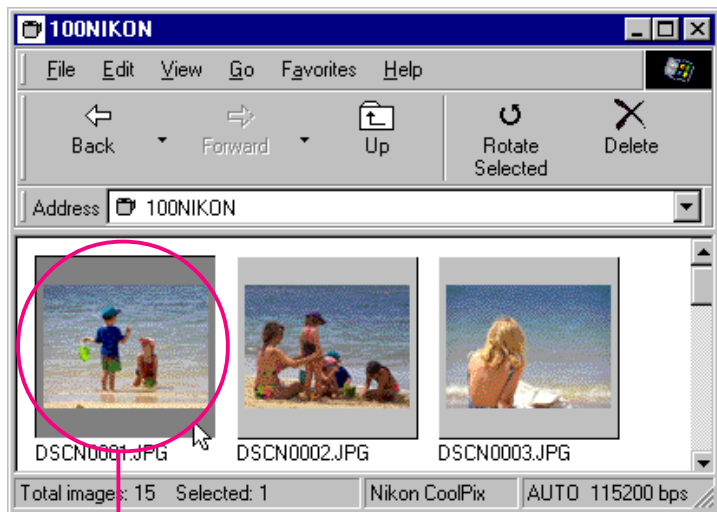
You can use these commands to browse the images in the camera's memory, compact flash-memory cards, and your computer disk. Operating procedures are the same as those for browsing in My Computer. See the preceding chapter for details.

Working with Images

In browsing with *Nikon View*, you can use the same standard operations that you would with other files on Windows. This chapter describes how to preview images, copy them to disk, and open them for editing in other applications.

Selecting Thumbnails

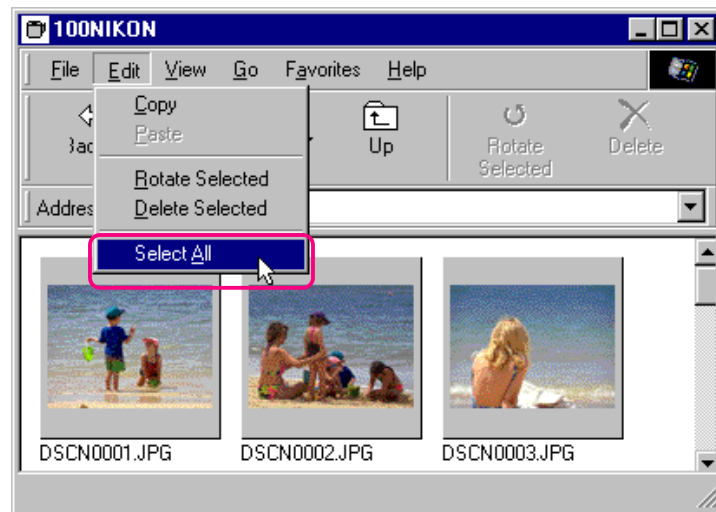
To copy, print, or delete an image, select the desired thumbnail by clicking it once. Selected thumbnails are indicated by a dark gray border.



Selected thumbnail

To select multiple thumbnails, hold down the **Ctrl** key on the keyboard while clicking each image in turn.

To select all thumbnails, select **Select All** from the **Edit** menu.



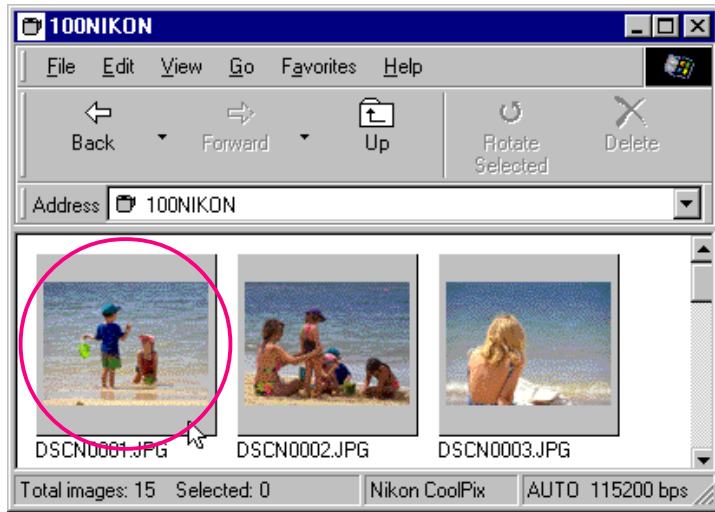
Short-cut: Press **A** on the keyboard while holding down the **Ctrl** key, or click the right mouse button in an empty area of the window and choose **Select All** from the right-button menu.

Viewing Images

Images can be viewed at full resolution in image windows. Images in image windows can be rotated and zoomed in or out using the controls on the image window toolbar. Any number of image windows may be open at one time.

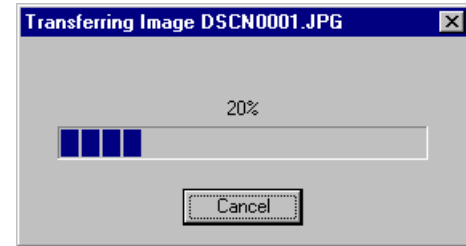
Opening images in image windows

Double-click the thumbnail you wish to view.

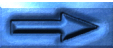


Short-cut: Select the thumbnail with the right mouse button and choose **Preview** from the right-button menu.

While image data are being copied to the image window, the following indicator is displayed. Click **Cancel** to abort the operation.





Once transfer is complete, the image is opened in an image window.



Rotating images and zooming images in and out

Images in the image window can be rotated or zoomed in or out using the buttons in the image window toolbar.

 **Rotate** The image view is rotated ninety degrees to the left each time this button is clicked

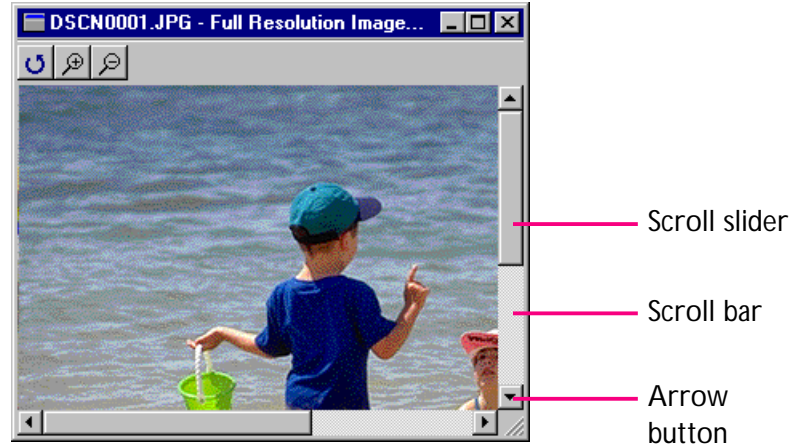
 **Zoom In** Click to zoom the image view in


 **Zoom Out** Click to zoom the image view out

Note: *Rotation and zoom operations performed in the image window are not reflected in the thumbnail images in the browsing window.*

Scrolling and resizing the image window

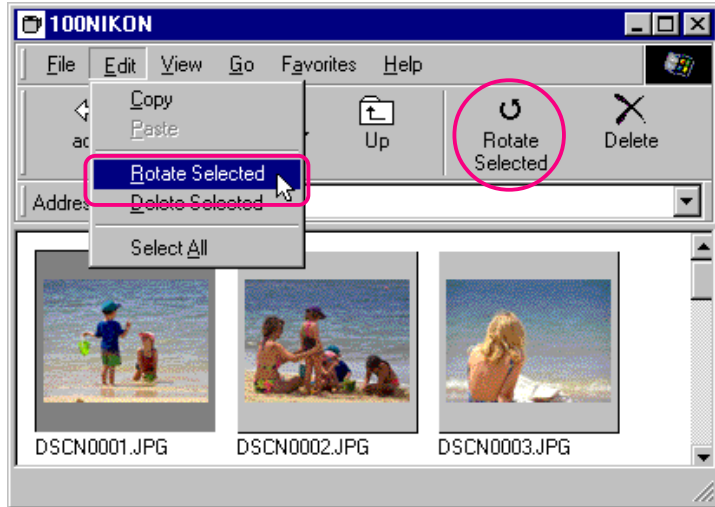
When the entire image does not fit in the image window, you can view the hidden portion by dragging the scroll sliders at the right and bottom of the window, or by clicking the scroll bars or arrow buttons. Alternatively, you can enlarge the window itself by dragging the window's borders.



To close an image window, click the close button () at the right end of the title bar.

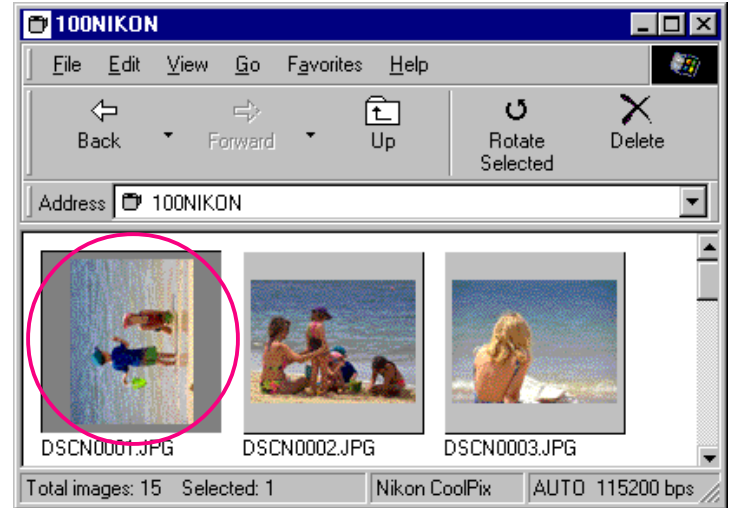
Rotating Thumbnails

Selected thumbnails in the browsing window can be rotated ninety degrees to the right by selecting **Rotate Selected** from the **Edit** menu or clicking the **Rotate Selected** button in the tool bar.



Short-cut: Select the thumbnail with the right mouse button and choose **Rotate** from the right-button menu.

Rotating the selected thumbnail.



Note: Rotations applied to thumbnails in the browsing window have no effect on the images in the camera, or on copies of the image that have already been saved to disk. Rotations are saved if the image is copied to disk after having been rotated.

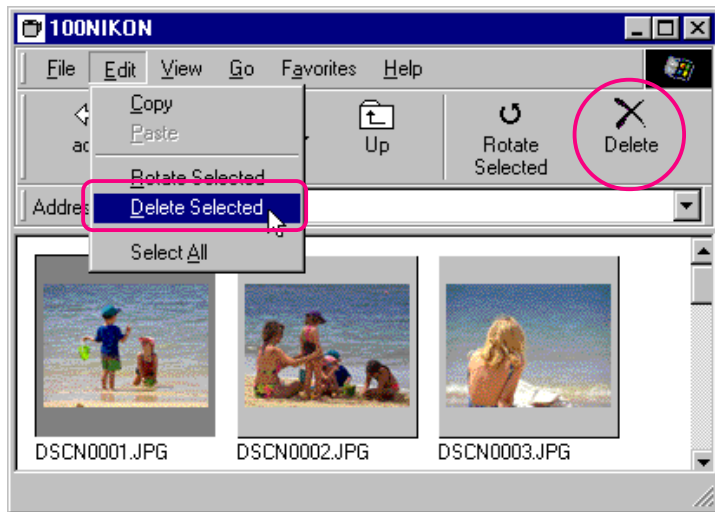
Deleting Images and Folders

Images can be deleted from the camera's memory when no longer needed. Note that images can not be recovered from the Recycle Bin after deletion; be sure to back up any images you would like to keep.

Caution: Images that have been protected using the camera or the Properties window can be deleted.

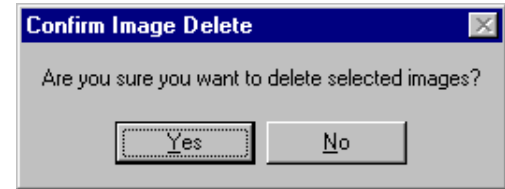
Follow these steps to delete selected images.

- 1 Select the images you wish to delete and choose **Delete Selected** from the **Edit** menu, or click the **Delete** button in the toolbar.



Short-cut: Delete selected thumbnails by pressing the del key on the keyboard, or click thumbnails with the right mouse button and choose **Delete** from the right-button menu.

A confirmation dialog box will appear.



- 2 Click **Yes** to delete the selected images.

Click **No** to return to the browsing window without deleting the images.

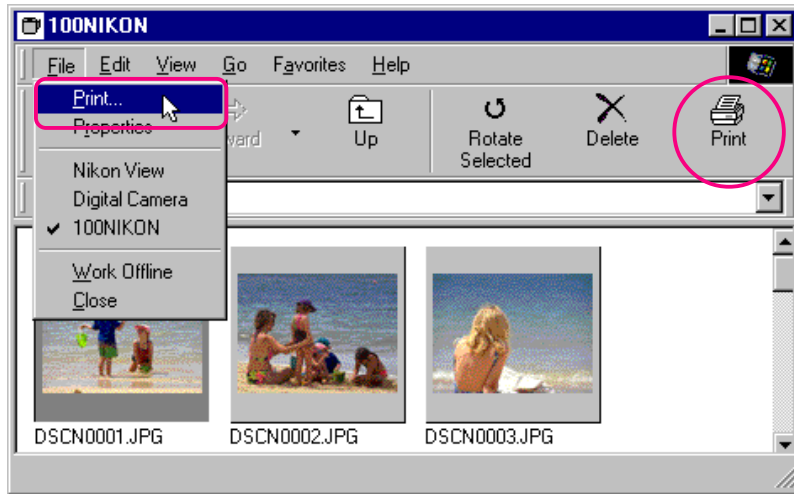
To delete all folders and images which are being stored in the camera's memory (the compact flash-memory card which is inserted into the camera), select the **Digital Camera** icon, and then choose **Format** from the **File** menu, or click on the **Digital Camera** icon with the right mouse button and choose **Format** from the right-button menu.

Printing Images

Nikon View allows you to print selected images or all the images in the browsing window.

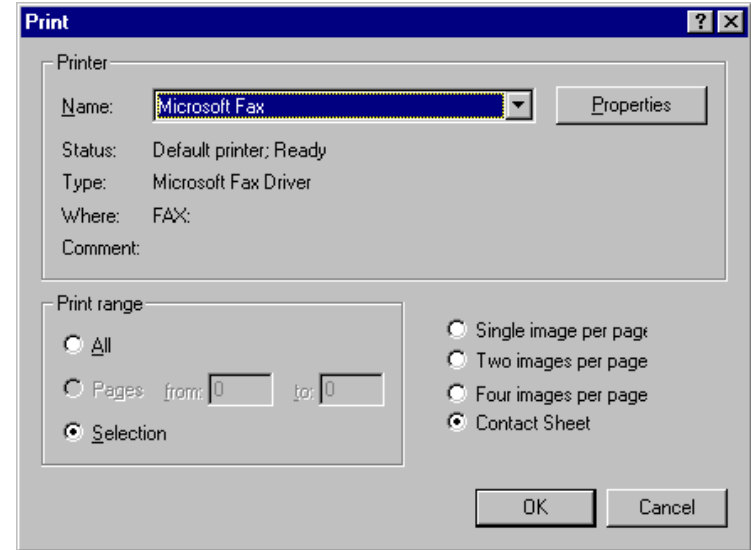
Follow these steps to print selected images.

- 1 Select the images you wish to print and then select **Print...** from the **File** menu, or click the **Print** button in the toolbar.



Short-cut: Select the thumbnail with the right mouse button and choose **Print...** from the right-button menu.

The Print dialog box will appear.



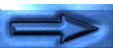
- 2 After making changes to printer settings, click **OK** to print the selected images.

Print dialog box options:

Printer

Name

Gives the name of the active printer. Click the arrow key to the right of the listed printer to bring up a list of the printer drivers currently installed on your system, allowing you to select a different printer. The type, location, and current status of the selected printer are listed beneath this item.



Properties

Click this button to bring up the Properties dialog box for the selected printer; here you can change paper size and graphics settings. The specific contents of the Properties dialog box depend on the printer selected.

Print range

All

With this command, all the images displayed in the browsing window are printed.

Selection

With this command, only the images currently selected in the browsing window are printed.

Number of images per page

Single image per page

With this command, each image is printed on a separate sheet.

Two images per page

With this command, two images are printed on each sheet.

Four images per page

Select this command to print four images per sheet.

Contact Sheet

This command prints selected images as thumbnails.

OK

Prints the image at the specified settings, and returns you to the browsing window.

Cancel

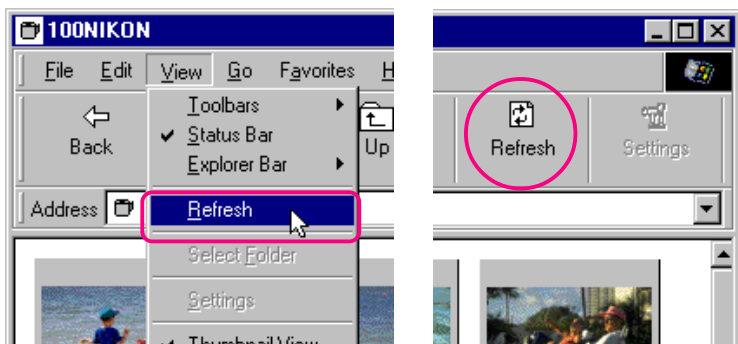
Returns you to the browsing window without printing the image.

Refreshing Thumbnails and Folders

The digital camera can be disconnected while your computer is on and later reconnected to the computer. If you have taken new photographs, or deleted or changed the hide/protect status of existing photographs while the camera was disconnected, you will need to update the thumbnails in the browsing window. You may also need to update thumbnails if you have replaced a memory card while browsing images on the camera's flash-memory card, using a compact-flash card reader or card drive; or if you have copied files to or deleted files from the active folder while browsing images on disk.

✓ Caution: Do not disconnect the camera while the data-transfer icon is displayed. (The data transfer icon varies according to your camera model.)

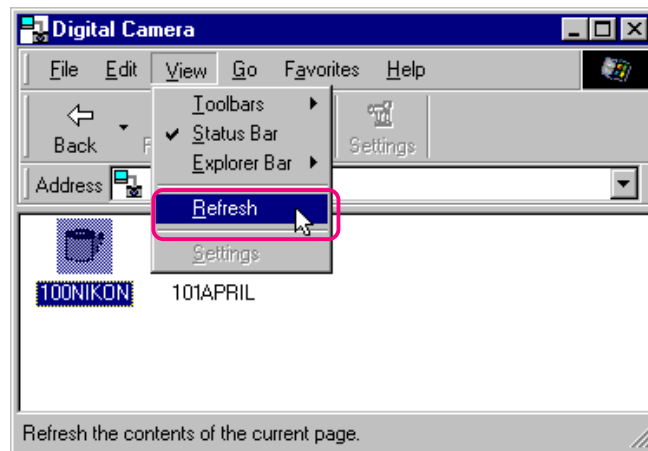
To update the thumbnails, select **Refresh** from the **View** menu or click the **Refresh** button in the toolbar.



Short-cut: Click the right mouse button in an empty area of the window and choose **Refresh** from the right-button menu.

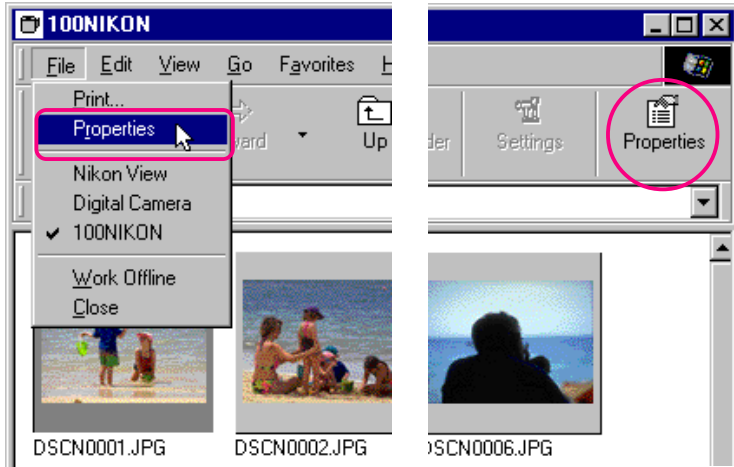
The images in the selected medium (the camera if **Digital Camera** is selected, a compact flash-memory card if **Removable Media** is selected, or a specified folder on a disk if **Hard Disk** is selected) will be read, and thumbnail previews displayed in the window.

You can select **Refresh** from the **View** menu, while the folders are displayed.



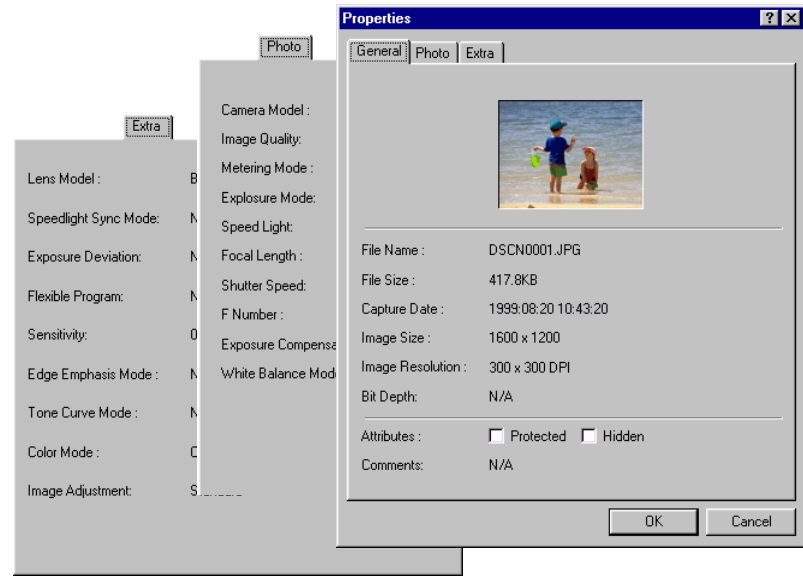
Viewing Image Information

Information on selected images can be viewed. After selecting the thumbnails, select **Properties** from the **File** menu or click the **Properties** button in the toolbar.



Short-cut: Select a thumbnail with the right mouse button and choose **Properties** from the right-button menu.

The Properties dialog box is displayed. The Properties dialog box contains three panels, General, Photo and Extra. You can switch between three panels by clicking the tabs at the top of the dialog box.



The General panel gives the file name, file size, capture date, and dimensions of the selected image. **Protected** and **Hidden** attributes set in the camera's playback mode can be changed using the **Attribute** check boxes. The Photo panel contains information on camera settings such as image quality and metering mode at the time the photograph was taken.

The Extra panel contains camera control settings information such as exposure deviation, sensitivity and tone curves.

Click **OK** to accept any changes to image attributes and close the Properties dialog box. Click **Cancel** to close the dialog box without changing attributes.

Copying Images to Disk

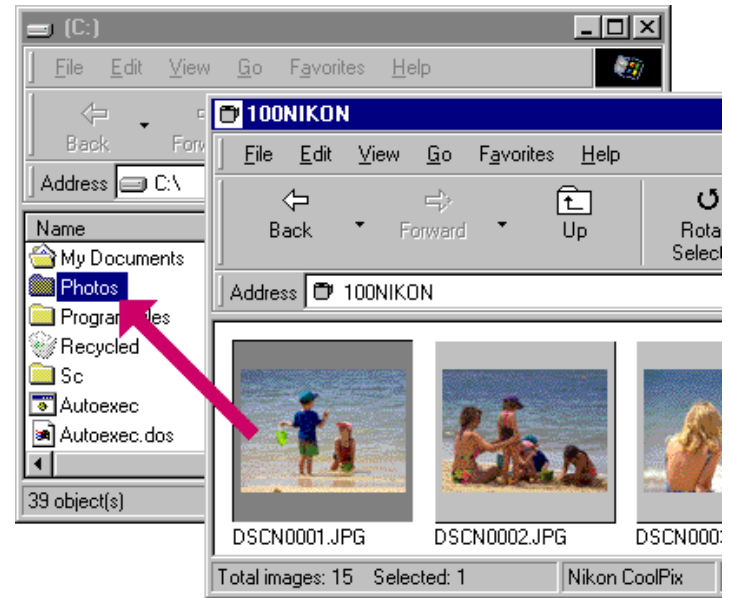
Images that you are browsing can be copied to disk by using a drag-and-drop or copy-and-paste operation. Before copying images to disk, locate or create a destination folder.

Tip

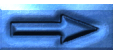
All images taken with the camera are assigned file names of the form "DSC_nnnn.xyz" where "nnnn" is a four-digit file number and "xyz" is a three-letter extension (JPG, TIF, NEF). Similarly, all image files saved in folders in the camera's memory are assigned file names of the same type. To prevent images already copied to disk from being overwritten, change the filename after copying an image, or create a new folder for each folder on the camera.

Copying images using a drag-and-drop operation

Select the images you wish to copy by clicking their thumbnails (to select multiple images, hold down the **Ctrl** key on the keyboard while clicking each image), then drag the images to the destination folder and release the mouse button.



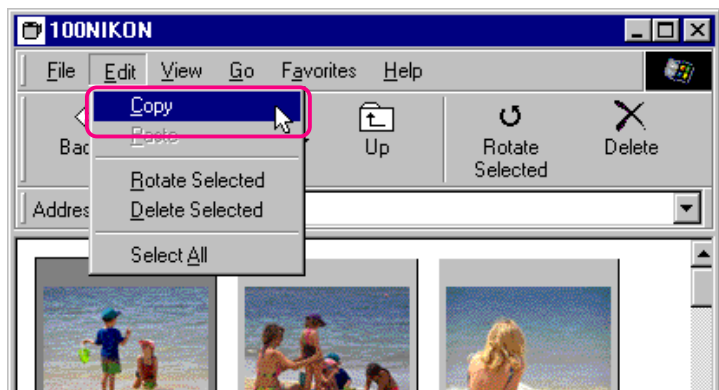
The progress indicator will be displayed while images are copied to disk. Click **Cancel** to abort the operation. Once all images have been copied to disk, the progress indicator will disappear.



Copying images using a copy-and-paste operation

Follow these steps to copy images to disk using a copy-and-paste operation.

- 1 Select the images you wish to copy by clicking their thumbnails (to select multiple images, hold down the **Ctrl** key on the keyboard while clicking each image), then select **Copy** from the **Edit** menu.

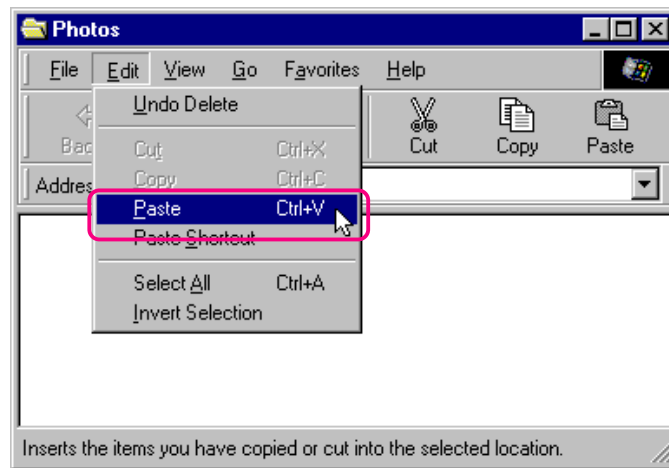


Short-cut: Press **C** while holding down the **Ctrl** key on the keyboard, or click a thumbnail with the right mouse button and choose **Copy** from the right-button menu.

The progress indicator will be displayed while images are copied to the clipboard. Click **Cancel** to abort the operation.

Once all images have been copied, the progress indicator will disappear.

- 2 Open the destination folder and select **Paste** from the folder's **Edit** menu.



The selected images will be copied to the destination folder.

Tip

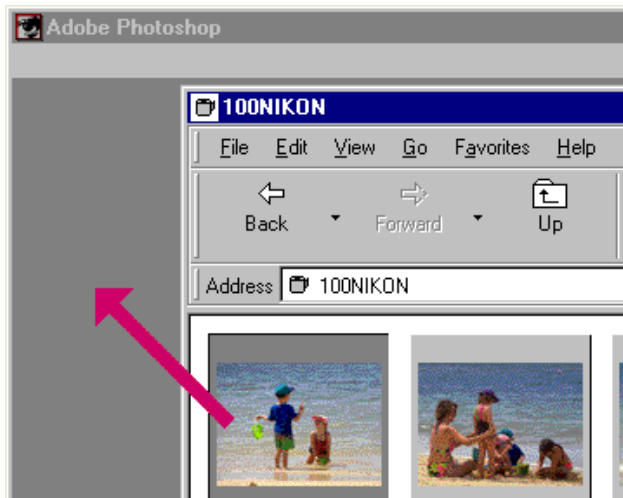
When copying a thumbnail to disk, if an image with the same filename has previously been copied, you will be asked whether you wish to replace the existing file. If you select **No**, a temporary file containing the image data is created in the Windows temporary folder (path "(Windows folder)\Temp\Camexp\Transfer"). Then, when you copy files with redundant names to disk, they are saved under names created by adding a number in brackets ([1], [2], [3], [...]) to the filename. This prevents users from accidentally overwriting image files on the computer. If you use this operation repeatedly, however, you will fill the temporary file. To clear disk space, you may wish to delete the contents of this temporary folder periodically—the "Windows folder" is the folder to which Windows has been installed.

Opening Images in Another Application

You can open the thumbnails that you browse in any application that support JPEG (".JPG") or TIFF (".TIF") files. Images can be opened directly from the application or by a drag-and-drop operation.

Opening image files by drag-and-drop

Images that have been selected in the browsing window can be opened in another application by dragging the thumbnails over an open application window and releasing the mouse button.



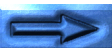
The images will be opened in the application.



Use the **Save As...** command to save the images in the appropriate folder.

Tip

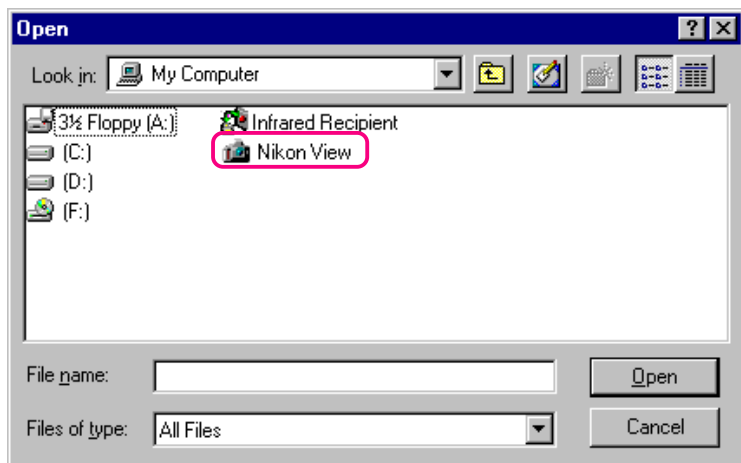
After opening images taken with the camera in another application, a temporary file containing the image data is created in the Windows temporary folder (path "(Windows folder)\Temp\Camexp\Transfer"). As repeated use of this operation will fill the temporary file, you may wish to delete the contents periodically to clear disk space. If you save the open image using the **Save** command, it is saved in the temporary folder. Use the **Save As...** command to save the image in the appropriate folder—the "Windows folder" is the folder to which Windows has been installed.



Opening image files from other applications

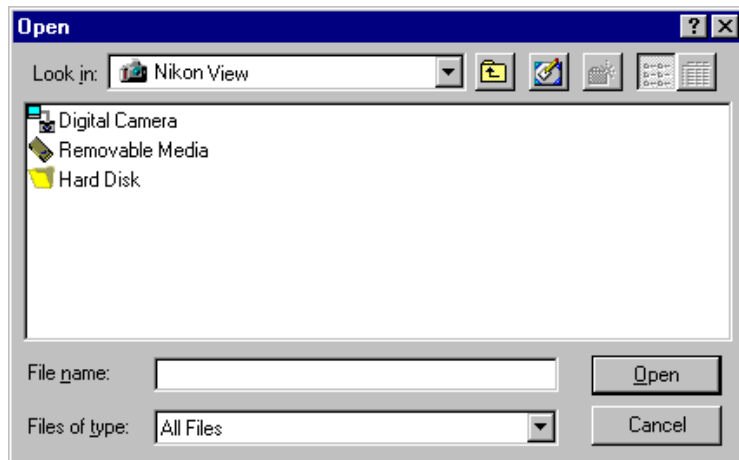
Follow these steps to open images using the applications' open dialog.

- 1 You can open images in another application by selecting **Open...** or **Open File...** from the application's **File** menu.
- 2 In the application's Open dialog box, select **Nikon View** from the drives listed under My Computer and click **Open**.



The **Digital Camera**, **Removable Media**, and **Hard Disk** icons are displayed.

- 3 Double-click the icon of the medium where the desired image is saved.

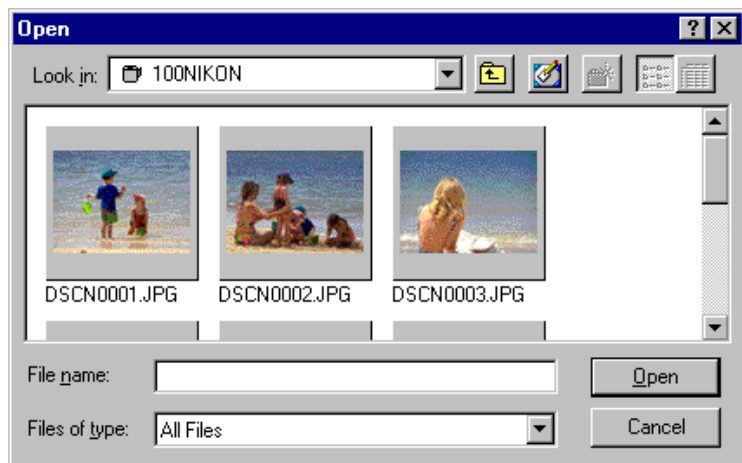


If you chose **Digital Camera**, or **Removable Media**, more folders from memory are displayed. **Hard Disk** displays a Select Folder dialog box.



4 Select a folder.

Thumbnail previews of the images in the selected folder will be displayed (to change the list display, right-click in an empty area by the thumbnails, and select **List View** from the menu).



Note: The dialog box shown above is the standard Windows Open dialog box for 32-bit applications. The contents of the dialog box may vary depending on the application.

5 Select the thumbnail you wish to open and click **Open**.

The selected image will be opened in a window within the application.

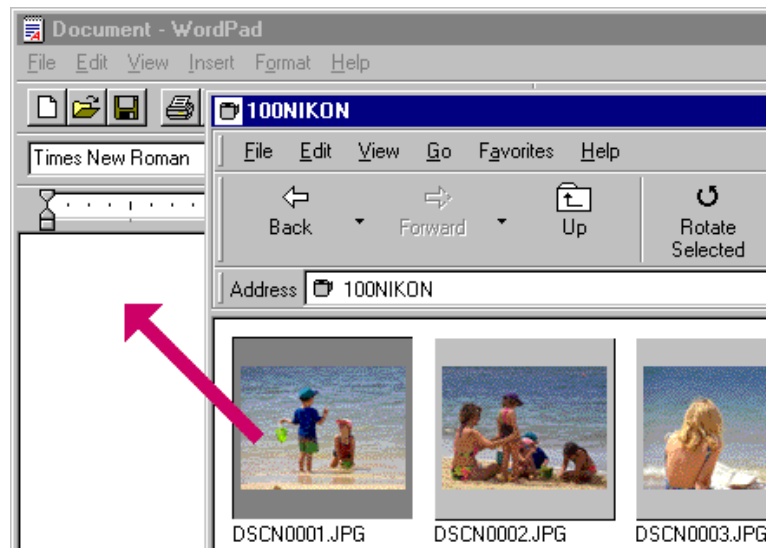
Use the **Save As...** command to save the images in the appropriate folder.

Inserting Images into Documents

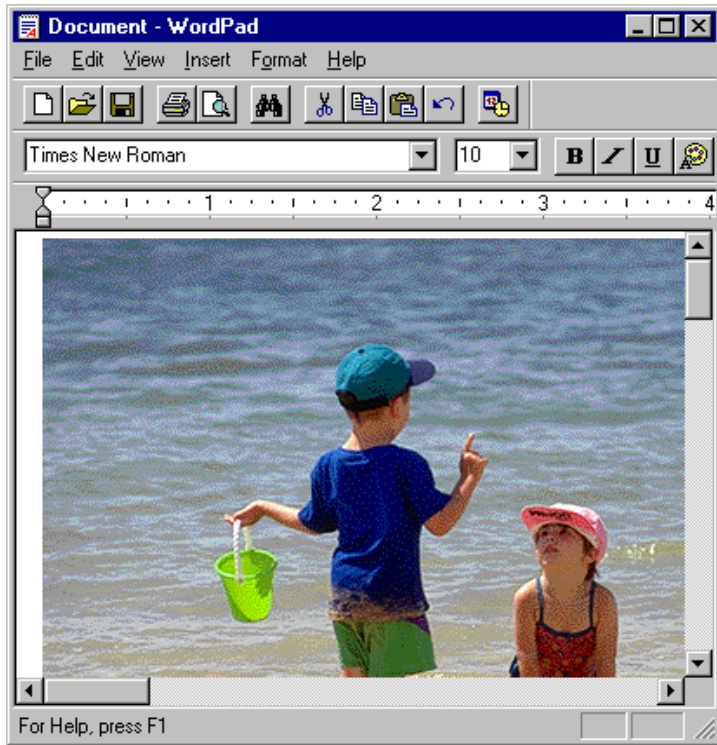
Nikon View supports OLE 2.0, which allows you to insert images taken with the COOLPIX digital cameras into documents created by any OLE 2.0 application that supports the JPEG (.JPG) or TIFF (.TIF) image format. Images can be inserted in documents directly using drag-and-drop, or copy-and-paste operations; or they can be embedded using the insert object command.

Inserting images by a drag-and-drop operation

Drag the image you wish to insert over an open document window in another application.

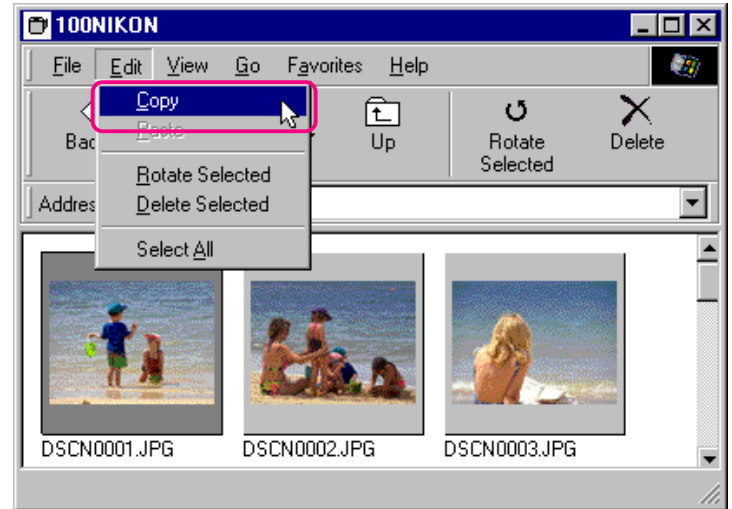


If the application supports OLE 2.0, the image will be inserted in the document as shown below.



Inserting images using a copy-and-paste operation

In the browsing window, select the image you wish to insert and select **C**opy from the **E**dit menu.



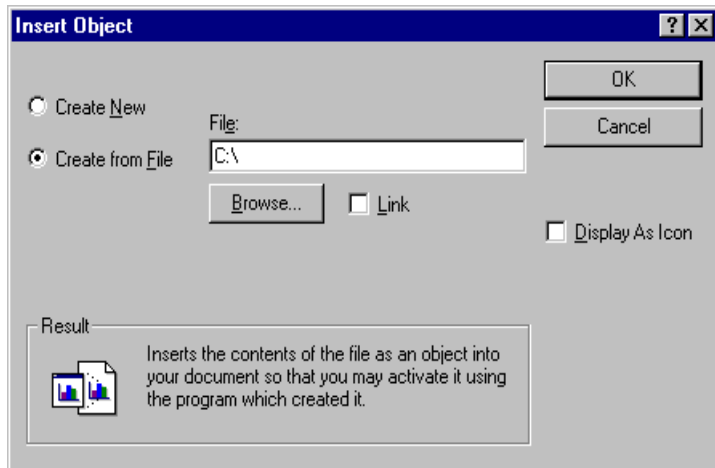
Next, open the destination application and display the document window into which you wish to insert the image. Paste the image into the document by positioning the cursor, and selecting **P**aste from the application's **E**dit menu.



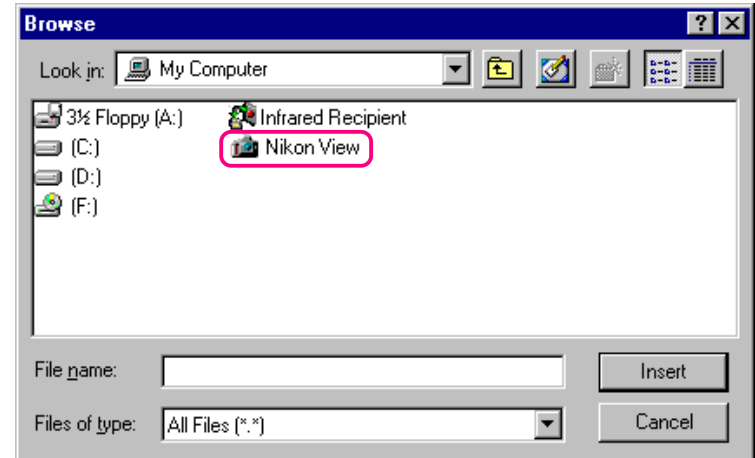
Inserting images using the insert object command

In applications that support OLE 2.0, images can be inserted in documents using the application's **Insert Object** command. Follow these steps to insert images using the **Insert Object** command.

- 1 In the Insert Object dialog box, choose **Create from File**, and then click **Browse...**



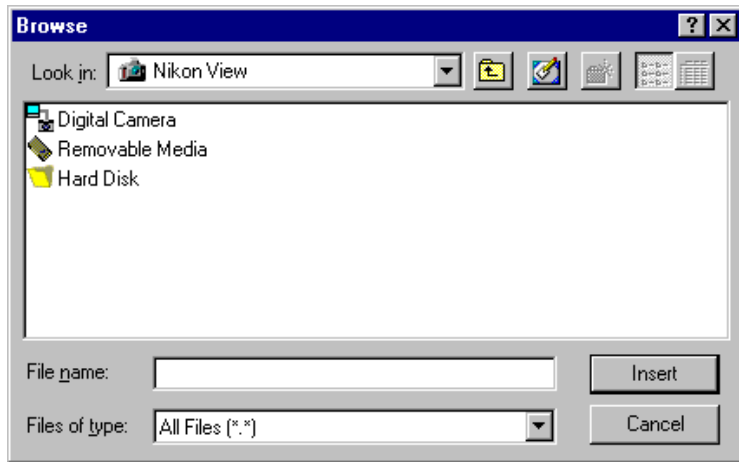
- 2 In the Browse dialog box, select **Nikon View** from the drives listed under My Computer in the **Look in** pop-up menu, and then click **Insert**.



The **Digital Camera, Removable Media, and Hard Disk** icons are displayed.



- 3 Double-click the icon of the medium where the desired image is saved.



If you chose **Digital Camera**, or **Removable Media**, more folders from memory are displayed. **Hard Disk** displays a Select Folder dialog box.

- 4 Select a folder.
Thumbnail previews of the images in the selected folder will be displayed (to change the list display, right-click in an empty area by the thumbnails, and select **List View** from the menu).



- 5 Select the image you wish to insert and click the **Insert** button to return to the Insert Object dialog. Click **OK** to insert the selected image in the document.

Preference

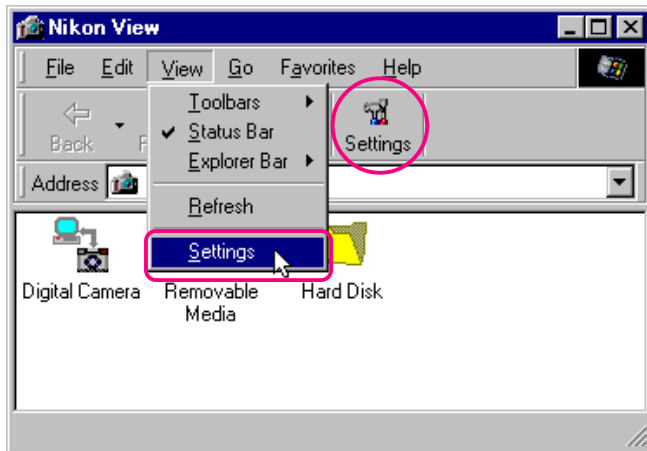
This chapter covers connection port and data transfer rate settings adjustment.

Changing Port, Camera Type and Rate Settings

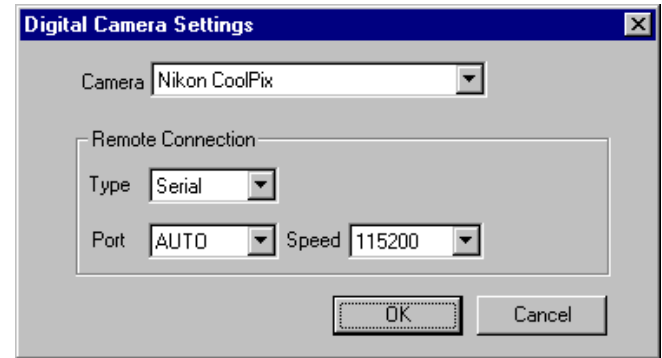
The port used to connect to the camera and the data transfer rate (port speed) can be changed after installation.

Follow these steps to change settings.

- 1 In the Nikon View window, select **Settings...** from the **View** menu, or click the **Settings** button in the toolbar.



The following Digital Camera Settings dialog box will be displayed.



- 2 Make the desired settings changes and click **OK**.

Digital Camera Settings dialog box options:

Camera

The name of the camera currently connected is displayed. If you have installed *Nikon View DX*, you can also select the Nikon D1 digital camera. For more information, see the *Nikon View DX "Reference Manual"*. Choose **Nikon CoolPix** for COOLPIX cameras.

Remote Connection

Type

If you've selected Nikon D1, the Remote Connection Type indicator will read **1394** (IEEE 1394 interface). At all other times, the port type displayed will read **Serial**.



Port

Click the arrow button to the right of this text box to display a list of supported ports. Select the port to which the camera is connected from among **AUTO**, **COM1**, **COM2**, **COM3**, and **COM4**. If you choose **AUTO**, the computer automatically detects the port to which the camera is connected.

Note: *If you consistently connect your camera to just one port, select the appropriate port number, rather than **AUTO**, to speed up processing.*

Speed

Clicking the arrow button to the right of this field displays a list of supported speeds (data-transfer rates).

OK

Accepts any changes to port settings and closes the Digital Camera Settings dialog box.

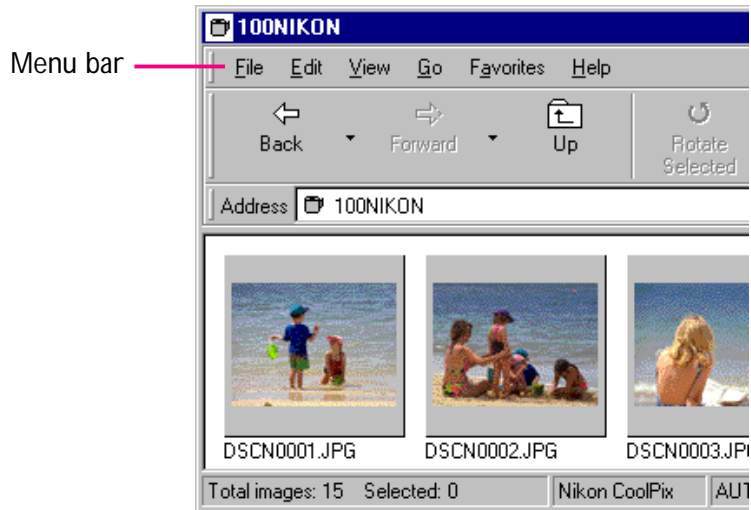
Cancel

Closes the Digital Camera Settings dialog box without changing port settings.

This chapter provides a brief reference guide to *Nikon View's* menu bar and toolbar. Refer to this guide when you want to know the meaning of a command or button.

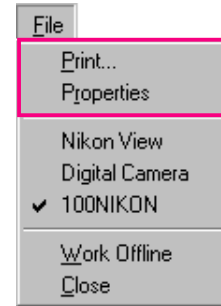
The Menu Bar

When you browse images in *Nikon View*, *Nikon View* commands are added to the standard Windows menu commands. The commands available in each menu are outlined below.



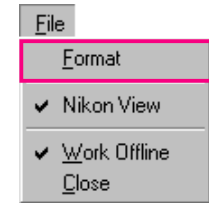
The File Menu

Browsing window



These commands can only be used in the Browsing window.

Nikon View window



This command can only be used in the Nikon View window.

Print...

Allows you to print the currently selected image to a printer that you specify. You can also choose this command by clicking the **Print** button in the toolbar.

Properties

Displays the properties for the selected image in the Properties dialog box. You can also choose this command by clicking the **Properties** button in the toolbar.

Work Offline

Allows you to perform work while you are offline.

Close

Closes the Nikon View window, terminating your *Nikon View* session. You can also quit the program by clicking the close button (x) at the right end of the title bar.



The Edit Menu

The **E**dit menu may only be used in the browsing window.



Digital Camera window



This command can only be used in the Digital Camera window.

Copy

Copies the selected image to the clipboard. The image can be pasted into another folder or application using the paste command.

Paste

This command is unavailable.

Rotate Selected

Rotates selected images ninety degrees, counter-clockwise. You can also choose this command by clicking the Rotate Selected button in the toolbar.

Delete Selected

The selected image is deleted from the medium currently being browsed. You can also choose this command by clicking the Delete button in the toolbar.

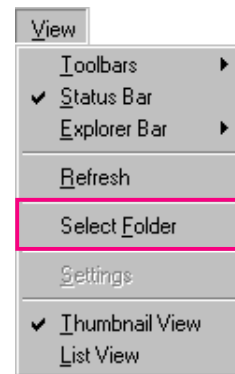
Select All

Selects all the images for copying, printing, or deletion.

The View Menu

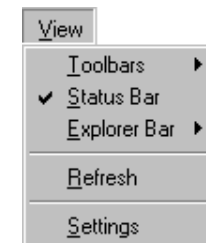
Commands available in the **V**iew menu vary depending on the active window.

Browsing window



This command can only be used when browsing a hard disk.

Nikon View window



Toolbar

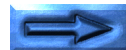
Choose this command to determine the type of toolbar that will be displayed.

Status Bar

Choose this command to display the status bar at the bottom of the Nikon View window.

Explorer Bar

Choose this command to determine the type of Explorer bar that will be displayed.



Refresh

Updates the images in the window. You can also choose this command by clicking the **Refresh** button in the toolbar, or select it from the **View** menu, while the folders are displayed.

Select Folder

Displays the Browse for Folder dialog box, allowing you to select the folder containing the images you want to browse. You can also choose this command by clicking the **Select Folder** button in the toolbar. This command may only be used when browsing images in the Hard Disk window.

Settings...

Displays the Digital Camera Settings dialog box, where you can make changes to port settings. You can also choose this command by clicking the **Settings** button in the toolbar. This command may only be used in the Nikon View window.

Thumbnail View

Displays the images as thumbnails. You can also choose this command by clicking the **Thumbnail View** button in the toolbar.

List View

Displays the images as a simple list, without thumbnails. You can also choose this command by clicking the **List View** button in the toolbar.

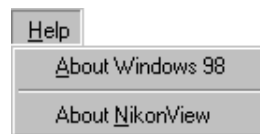
The Go Menu

A standard Windows menu command. Refer to your Windows manual for details.

The Favorites Menu

A standard Windows menu command. Refer to your Windows manual for details.

The Help Menu



About Windows 98

Displays Windows 98 version information.

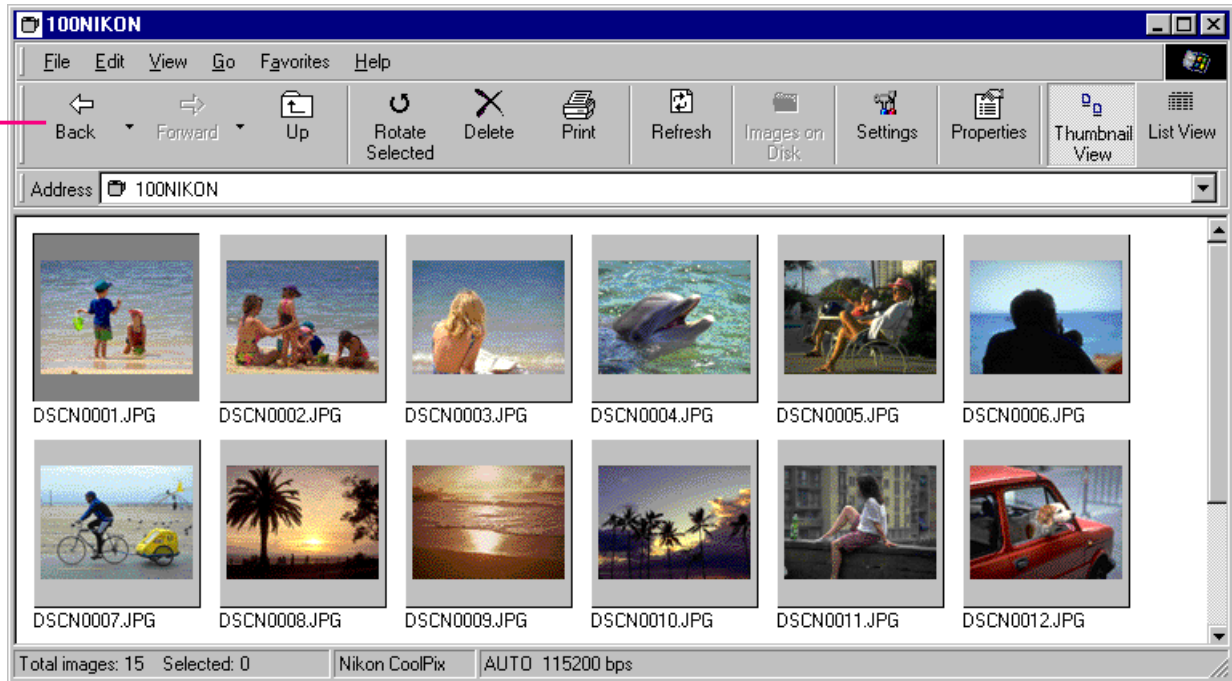
About NikonView

Opens the "About NikonView" dialog, which gives copy-right information for the program.

The Toolbar

The buttons in the toolbar allow you to manage images in the browsing window and perform various operations.

Tool bar



Tip

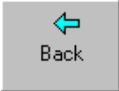

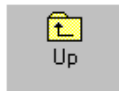



Enlarge the window in order to view all of the command buttons in the toolbar. When you locate the cursor on the window frame, it changes into a bi-directional arrow. Drag this arrow to enlarge the window.







Tip

Depending on the resolution of your display, the right-edge tool buttons may not be visible, even when you maximize the image to fill the screen. In that case, open the **Toolbars** submenu on the **View** Menu, and then clear **Text Labels** to change to small tool buttons without text labels. (To view a button's label, place the mouse pointer on the button, and wait for a few seconds. A label will pop up.)



The commands accessible from the toolbar are outlined below.

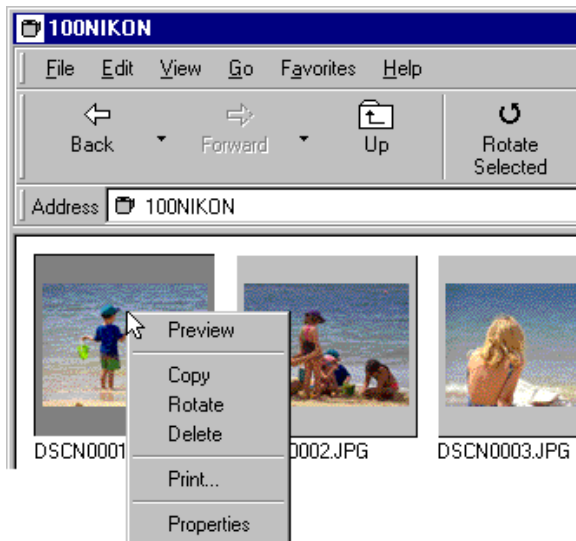
Button	Function
 Back	Returns to the previous window.
 Forward	Proceeds to the next window.
 Up	Opens the folder one level up in the file hierarchy (in the case of the "Nikon View" folder, the "My Computer" folder).
 Rotate Selected	Rotates the selected images 90° to the left.
 Delete	Deletes the selected images. Clicking this button brings up the Confirm Image Delete dialog box, allowing you to permanently remove the selected images from the open media.
 Print	Brings up the Print dialog box, allowing you to print selected images to a printer of your choice.

Button	Function
 Refresh	Updates the images in the window.
 Select Folder	Displays the Browse for Folder dialog box, allowing you to select the folder containing the images you want to browse. This command may only be used when browsing images in the Hard Disk window.
 Settings	Displays the Digital Camera Settings dialog box, where you can change port settings. You can also select the camera type when both Nikon View 2 Version 2.5 and Nikon View DX are installed. This command may be used in the Nikon View window.
 Properties	Displays the Properties dialog for the selected image.
 Thumbnail View	Displays the images as thumbnails.
 List View	Displays the images as a simple list, without thumbnails.

The Right-Button Menu

You can use right-button menu commands to perform various operations such as Preview, Copy, List View, and so on.

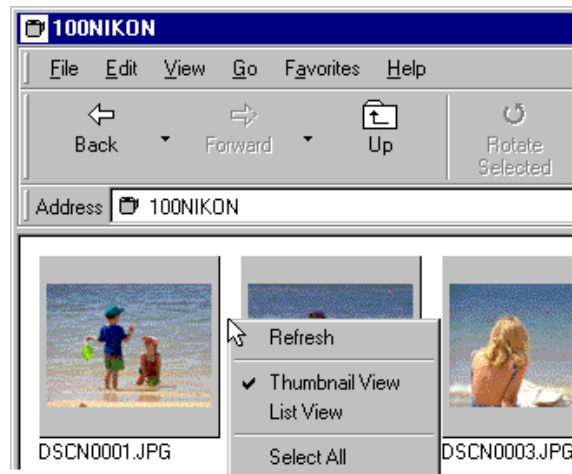
Click a thumbnail with the right mouse button to select the image and display a menu of command shortcuts.



Tip

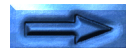
Similarly, you can use right-button menus with the open dialog for images opened in other applications, and with the Browse dialog when you insert images. (Only, however, in the standard Windows dialog box for a 32-bit application.)

Clicking the right mouse button in an empty part of the window displays the menu shown below.

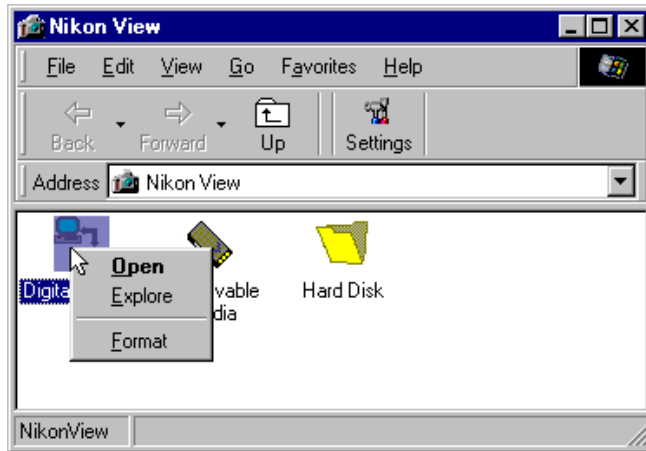


Note: You can use the **Select Folder** command when browsing images in the Hard Disk window.

These menus allow quick access to the commands in the menu and toolbar.



Right-clicking the **Digital Camera** icon in the Nikon View window displays the menu shown below.



Right-clicking a folder icon in the Digital Camera window displays the menu shown below.

